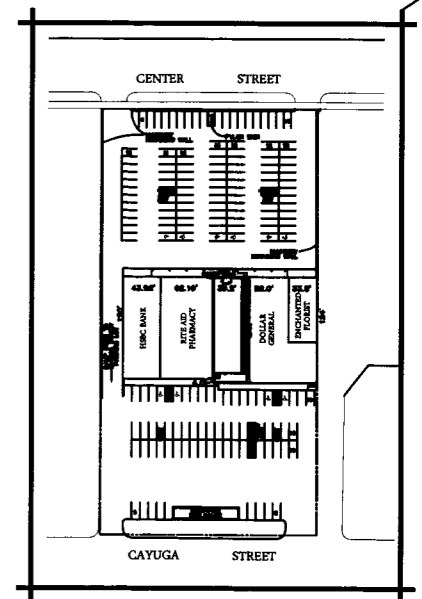


SITE PLAN

SCALE: 1" = 40'



KEY PLAN

N.T.S.

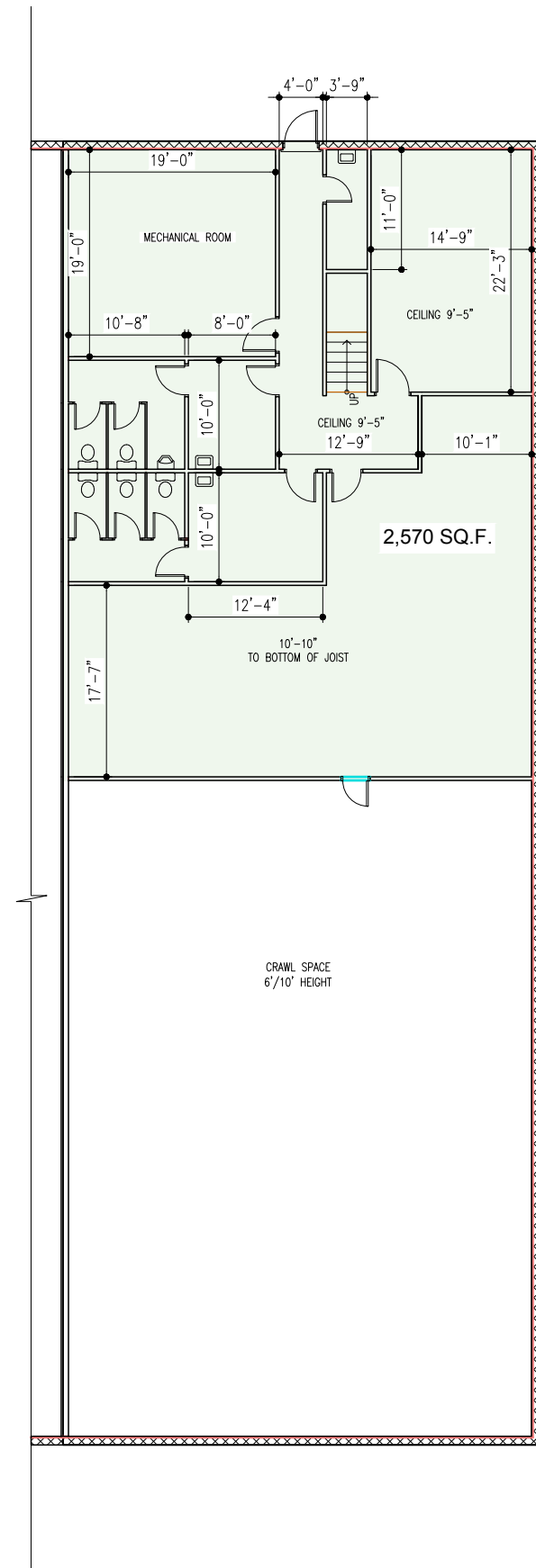
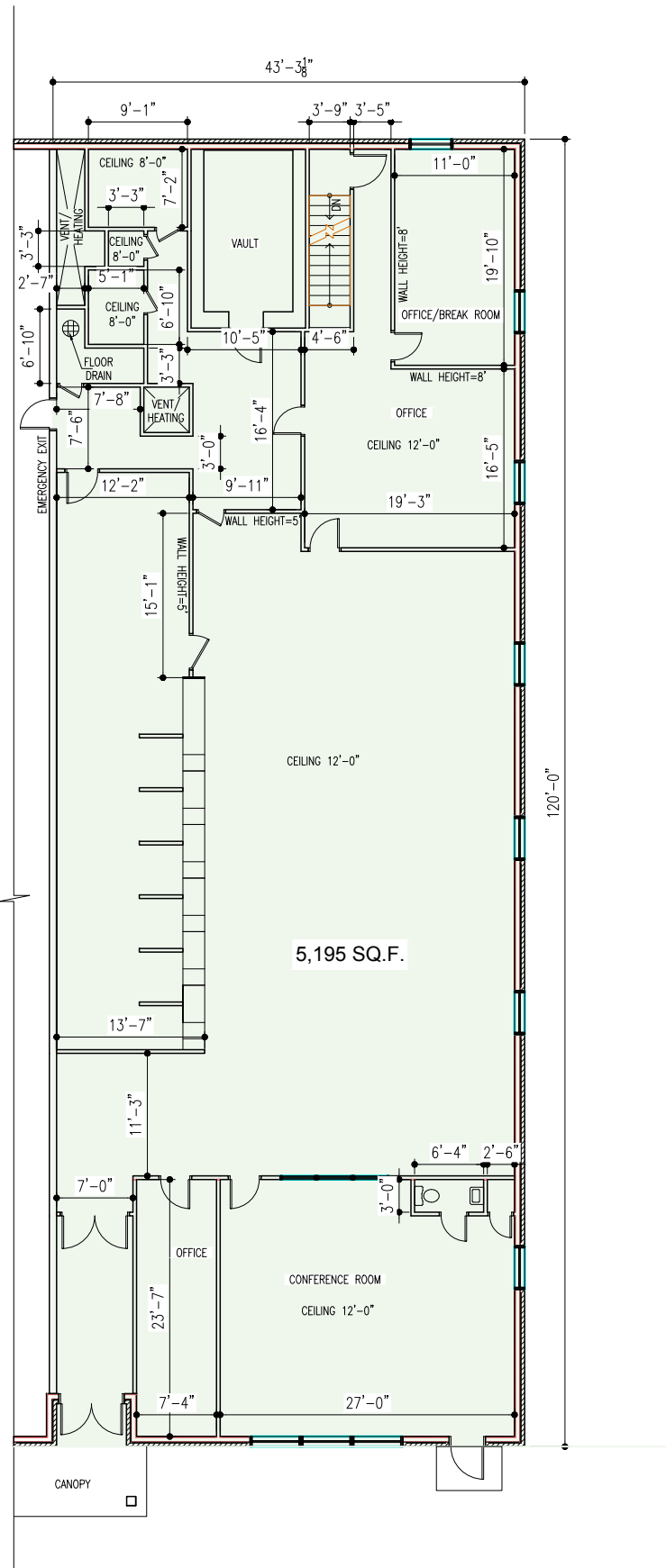


CENTER STREET PLAZA
 735 Center Street
 Lewiston, NY

Former Bank - Floor Plan



6495 TRANSIT ROAD
BOWMANVILLE NY 14026
www.innovativerealty.com



Revisions / Issues

REV	DATE	DESCRIPTION
1		

Seal

CENTER STREET PLAZA
735 CENTER STREET
LEWISTON, NY

Drawing
FLOOR PLANS, ELEVATIONS

Scale AS NOTED
Drawing Date 12/19/2016

Designed by: Tym Zhuk

Drawing No.

EXHIBIT#2

Seal

